



**POSNER**  
CENTER

**POSNER CENTER**  
FOR INTERNATIONAL DEVELOPMENT

**DENVER URBAN GARDENS**

1031



Suite 100

**2016** Annual Report





***Pictured:** Posner Center Tenants and Members express their ideas and encouragement on the artful "collaborate" wall.*

# Director's Letter

***Our Mission:** To build a community of innovators who grow lasting solutions to global poverty.*



In addition, the Posner team cultivated relationships beyond Colorado, enabling us to bring some high-profile visitors to Denver as well as to share our work with audiences across the US.

To continue to develop our understanding of our signature program, the International Collaboration Fund, Doug Vilsack and I made trips to East Africa and Guatemala, respectively, to visit organizations in our network. The work we witnessed there was inspiring and continues to inform our programming.

**DEAR COLLABORATORS,**

2016 was a dynamic, busy, and successful year at the Posner Center for International Development. We are proud to share our achievements and highlight the incredible work of our network of Tenants and Members.

Finally, our Board of Directors and staff worked on a five-year strategic plan, the highlights of which we share later in this report.

We are proud of the Posner Center's work to date, and look forward to further defining our strategic vision and working to make it a reality in the coming years. Thank you, our network, for your continued support and partnership in this journey.

Best,

**Meg Sagaria-Barritt**  
Interim Executive Director

We began the year by rounding out the Posner Center staff, adding a much-needed Office Manager and hiring a new Operations Manager. At the end of 2016, our founding Executive Director, Doug Vilsack, transitioned into a new opportunity. Doug's leadership of the Posner Center was instrumental, and he set the organization on a path for continued success, developing financial and governance structures, and working with the board and staff to establish a mission, vision, and a strategic plan to guide our efforts. The team he built is well positioned to continue working towards our mission.

This year, our programmatic efforts centered on strengthening the capacity-building training we offer to our Tenant and Member organizations, as well as starting to monitor and evaluate the impact of our programming on this network.



# 2016 By the Numbers

## A VIBRANT AND GROWING COMMUNITY

Partnering with **66 Tenant** organizations that are housed in the Posner Center, and **95 Members** who are engaged with the Posner Center but don't have designated office space, the Posner Center is a vibrant, inspiring community that is *growing lasting solutions to global poverty*.

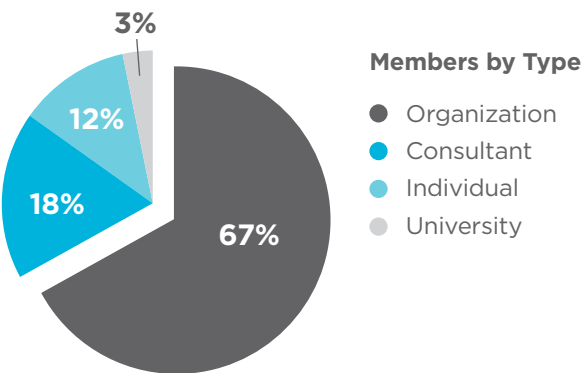
### Community Composition



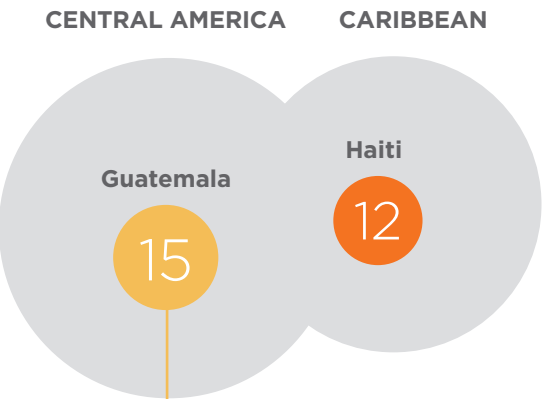
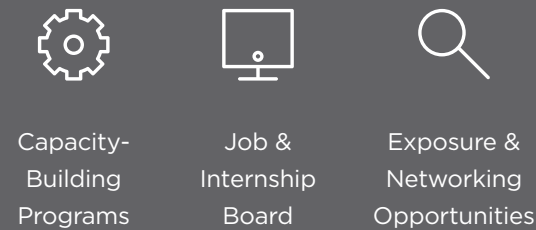
- Non-Profits
- For-Profits, Individual Consultants, & Companies

### Members: Our Broader Network

The Posner Center's Annual Membership Program allows us to grow beyond the limitations of our physical space and create a Colorado-wide international development network. Alongside Tenants, Members comprise the heart of this community, contributing their expertise, and enhancing our network of international innovators. Just like our Tenants, our Members are diverse.



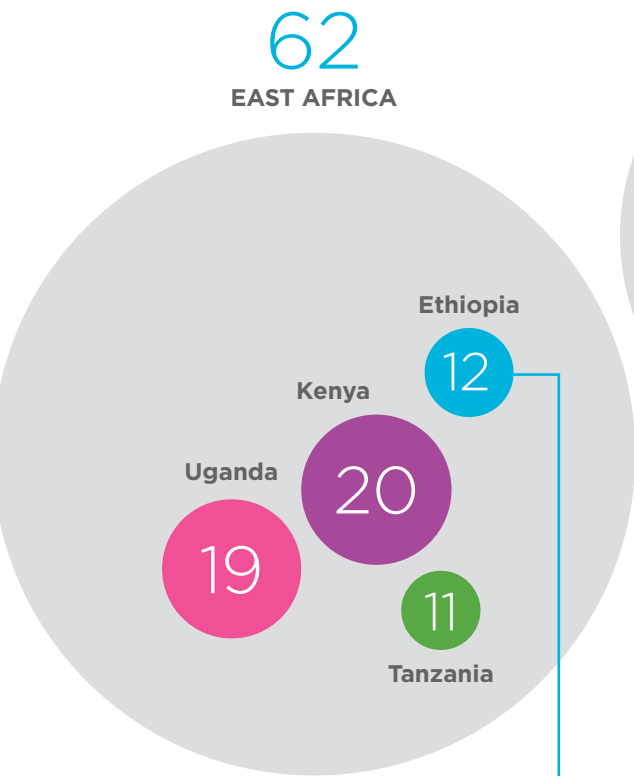
### Top Member Resources:



**Santa Catarina, Guatemala:**  
Milsa, a Girl Pioneer in Tenant Starfish's Youth Effect Group engages in a communication-building activity with her mother, Madgalena, and her mentor, Celena, during a home visit. (Photo credit: Kate Lord Photos and Films)

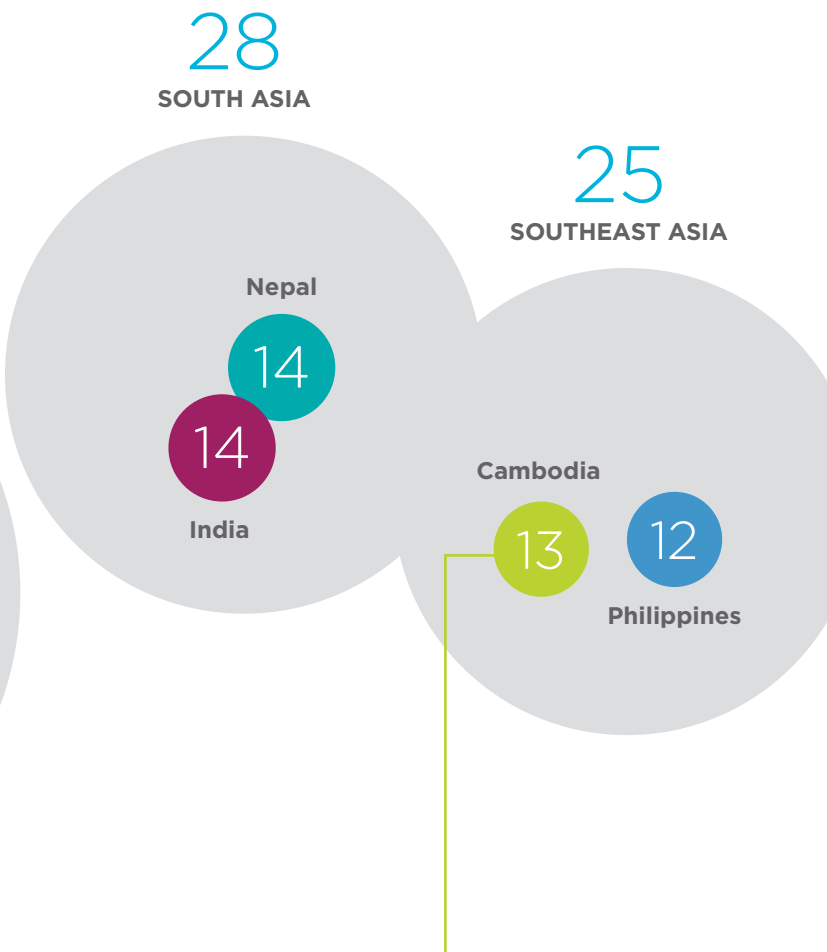
## WHERE WE'RE WORKING

Here are the top 10 countries where our network is working, broken down by region.



**Afar, Ethiopia:**  
A professional volunteer from Engineers Without Borders USA's Engineering Services Corps repairs a hand pump to restore water to a drought-stricken community. (Photo credit: Erin Cummings)

Check out our full list of Tenants & Members on p. 20!



**Battambang, Cambodia:**  
Julie Carey, founder of Member Write Our World, shares bilingual ebook authoring curriculum with students at the Learning Center of Tenant Children's Future. (Photo credit: Lorkfong Bot, IT Director at the Learning Center)

## Our Impact on Them

### HOW POSNER'S WORK IMPACTS TENANTS

The Posner Center supports our Tenant community in myriad ways, from maintaining an inspiring shared space to leading social and capacity-building programming. Here's a glimpse of what Tenants shared with us about how being at Posner has affected them.



85%

of Tenants believe it has helped them learn from other Tenants



77%

of Tenants believe it has helped them improve staff morale



76%

of Tenants believe it has helped them form stronger networks



73%

believe it has helped them collaborate more\*

*"Posner has directly contributed to the visibility of our organization in the Denver community and has created ongoing opportunities for our organization to develop and grow! We've participated in nearly all angles of programming at Posner and all have been beneficial, meaningful, and intentional."*

— **Heather Newell, The Women's Bakery**

*"The Posner Center is precious for the Denver development community. I find great value working here every day, being exposed to new ideas in a very collaborative environment."*

— **Chris Bleers, Engineers Without Borders USA**

*"Being at the Posner Center has greatly expanded our network and employee wellness through access to a wide range of events, professional development trainings, and opportunities for collaboration. The biggest impact though has just been the day-to-day environmental effect on our staff members as the positive and innovative energy in the Center is contagious."*

— **Hannah Bick, Starfish**

## Their Impact on the World

### TENANTS' IMPRESSIVE RESULTS

Our 60+ Tenant organizations are change agents worldwide. They work across sectors and geographies, creating measurable change in more than 100 countries. In their own words, here is a snapshot of the impact of just a few Tenants in 2016.



35 **WELLS**  
100,000 **PEOPLE**

In the most inhospitable region of Ethiopia, **Engineers Without Borders USA's** Engineering Service Corps assessed, repaired, and provided training to rehabilitate 35 wells, which now give over 100,000 people access to safe water.



500 **GIRLS AND YOUNG WOMEN**

**Shadhika** helped 500 girls and young women in India escape child marriage and trafficking, supporting them to complete high school, go to college, or get a job in the mainstream economy.



81 **HEALTH WORKERS**

**CU Peru** trained 81 Community Health Workers from 51 Peruvian Amazon villages on a variety of topics, including treatment of tropical diseases, women's health, and other basic healthcare skills such as hygiene and CPR.



1.4M **INDIVIDUALS**  
285,000 **HOUSEHOLDS**

**IDE** impacted over 1.4 million individuals—285,000 households globally—with an average benefit-to-cost ratio of 14.1 per client.



2,126 **HOUSEHOLDS**  
\$29 **PER MONTH**

Through the sale of solar products, **Elephant Energy** saved 2,126 households in Namibia approximately \$29 per month, simultaneously reducing exposure to harmful kerosene fumes and home fires.



# INTERNATIONAL COLLABORATION FUND



The International Collaboration Fund (ICF) is the Posner Center's signature program. Launched in 2015, the ICF is an innovative, collaborative grantmaking fund that supports promising partnerships among Tenants and Members. The program is supported by numerous foundation, individual, and corporate donors. The ICF brings the strength of the Posner network to life, enabling ideas to turn into projects, supporting resource-sharing, minimizing duplication, and leveraging the capacities of organizations through strategic partnerships.

## \$75,000

Total amount of money awarded in 2016

### 2016 PROJECTS:

- Children's Future, Sustainable Schools International, Empowering Youth in Cambodia, Trailblazer Foundation, and Asian Hope
- Children's Future and Write Our World
- Denver Urban Gardens, Friends of ENCA Farm, and Rocky Mountain Seed Alliance
- Edge of Seven, AfricAid, Africa Development Promise, Children's Future, Elephant Energy, Friends of ENCA Farm, Hope Shines, S.O.U.L. Foundation and the Posner Center
- iDE and Engineers Without Borders USA
- Into Your Hands Africa, Africa Development Promise, and Edge of Seven
- Technology Partnership, Cleo Parker Robinson Dance, and Hope Online Learning Academy
- World Child Cancer USA and Project C.U.R.E.

## 27

Tenant, Member, and partner organizations funded by the ICF since its inception.

## 10

Countries in which the ICF has funded projects.



### PROJECT SPOTLIGHT

#### Engineers Without Borders USA and iDE Join Forces

Crop spoilage is an enormous challenge and contributes to food insecurity, smallholder farmer poverty, and nutritional deficits across the developing world.

To address this problem, Engineers Without Borders USA and iDE received a \$20,000 ICF grant to design, build, and test a post-harvest crop cooling facility in Boane, Mozambique. Engineers from EWB-USA's Professional Service Corps designed a building utilizing piped groundwater that runs through pipes in the building walls to keep crops cool. iDE's in-country staff identified a location, sourced low-cost and widely available materials for construction, and facilitated the construction process.

The existing facility is on the electrical grid, but it can also be run off the grid. In 2017, they will test the efficacy of the crop cooler in a variety of scenarios and with different crops. Once they have clear data on best practice, they will work to scale the crop cooler throughout the iDE network of countries.





## ICF SITE VISITS

Last Spring, the Posner Center sent staff to the field to see some ICF projects in action. Visiting eight organizations in Uganda and Rwanda, and an additional six organizations throughout Guatemala, these trips helped increase our understanding of the work of Posner Center organizations on the ground.

### Joyabaj, Guatemala

We were present for the inauguration of a footbridge between two rural communities, El Bosque and Piedras Blancas. This project was jointly led by Bridges to Prosperity and Engineers Without Borders USA. The footbridge creates a means for safe, year-round passage between the villages and enables access to a municipal road for one of the communities, improving access to healthcare, education, and markets. The event was celebratory and included a live band, fireworks, and delicious food made by the women in the community.

### Kifumbiro and Masaka, Uganda

Through building relationships within the Posner Center network, a handful of Tenants realized that they were working independently to create and deliver similar entrepreneurship trainings to participants in their programs. Rather than continuing to work independently, they sought and received a 2015 ICF grant to develop a shared curriculum. In 2016, a smaller cohort - Into Your Hands Africa, Africa Development Promise, and Edge of Seven - sought additional funding to further refine and implement the curriculum in several distinct settings in Uganda. The aim was to pilot the curriculum, make necessary adaptations, and develop a model for ongoing replication, creating a pathway to scale.

During his trip to Uganda, Doug Vilsack visited two of the implementing organizations to assess the utility of curriculum in different contexts. In Masaka, Into Your Hands Africa (IYHA) had just delivered

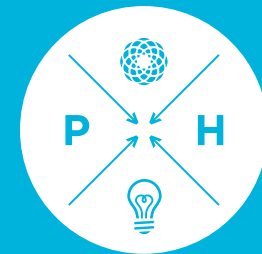
the first modules of the curriculum to participants. By training individuals who were already engaged in existing programs such as a chicken and pig-raising, IYHA used the curriculum to complement their existing programs and offer participants the skills to grow their businesses and eventually serve as models for the rest of the community. At Africa Development Promise's site in Kifumbiro, participants in their partner agricultural cooperative had not yet begun the training, but they showed Doug their current efforts to grow mushrooms as a high-value product. The cooperative expressed their interest in strengthening their entrepreneurial skills to help them meet increasing demand for mushrooms in East Africa.

Both organizations completed initial implementation of the entrepreneurial curriculum late in 2016, and continue to monitoring participant and community outcomes resulting from the program.





# SIGNATURE EVENTS



**POSNER  
POVERTY  
HACK**  
AN INTERNATIONAL  
DEVELOPMENT HACKATHON

## Posner Poverty Hack 2.0

Poverty Hack 2.0 was a fun and fast-paced 2.5-day competition where participants worked in teams to develop innovative solutions to address challenges faced by our Tenants in their work. The event brought together nearly 50 participants from a range of sectors, including tech, education, evaluation, and journalism.

Major sponsor Cognizant Quick Left generously funded implementation of the winning solution, produced by a team working on behalf of The Women's Bakery. Their approach was a simple text-based mobile tool to improve business management processes for women bakers in Rwanda. The team developed a prototype that uses simple character text messages to track transactions, while also providing detailed information on the location and time of sale. This project will be tested and refined throughout 2017.

## The Challenges



**Africa Agenda:** create a new digital strategy to help the organization connect with journalists to provide news with a more holistic perspective of the continent.



**Starfish:** create a monitoring and evaluation platform combined with a social network to improve contact with graduates of their program and collect better program data.



**The Women's Bakery:** develop an SMS messaging system to enable entrepreneurs to keep track of bread sales, increase accountability, and remain safe.



## Collaboration Celebration

Every October, the Posner Center invites our community to an open-house to celebrate the incredible work of this network, especially as exemplified by International Collaboration Fund grantees. This year we welcomed nearly 200 guests and raised crucial funds to further our mission. The highlight of the evening was a visit from Governor John Hickenlooper who shared his thoughts on Colorado's growing role in the global community.

## Business Leaders

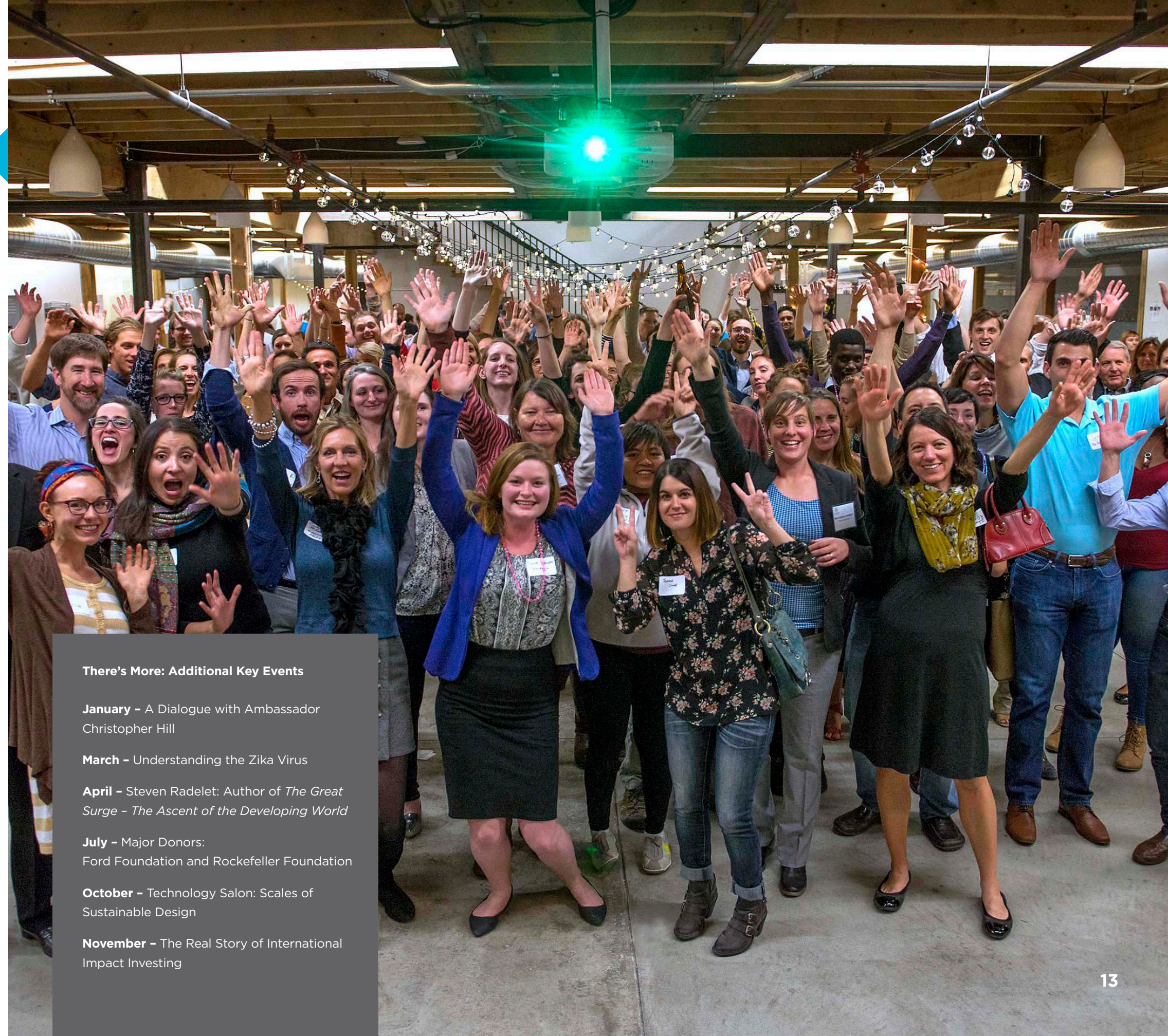
This event highlighted mutually-beneficial partnerships between Tenant and Member non-profits and global businesses.

- **Friends of ENCA Farm** and **Elephant Energy** shared the successes in spreading access to solar lights with the help of their respective partners, Nokero and Goal Zero.
- **Water for People** highlighted their 5-year partnership with the luxury vodka brand Absolut Elyx.
- **RENEW Strategies** spoke about using public-private partnerships to connect investors with opportunities in Ethiopia.

## Innovators Dinner

The annual Innovators Dinner honors individuals who are making their mark on global poverty alleviation by thinking outside the box and challenging prevailing ideas and approaches to combating poverty. In 2016, the Posner Center honored two inspiring women:

- **Dr. Karambu Ringera**, the Founder and President of International Peace Initiatives; and
- **Libby Cook**, Founder and Executive Director of Philanthropiece Foundation.



### There's More: Additional Key Events

**January** – A Dialogue with Ambassador Christopher Hill

**March** – Understanding the Zika Virus

**April** – Steven Radelet: Author of *The Great Surge* – *The Ascent of the Developing World*

**July** – Major Donors: Ford Foundation and Rockefeller Foundation

**October** – Technology Salon: Scales of Sustainable Design

**November** – The Real Story of International Impact Investing



# PROGRAMMING

The Posner Center facilitates robust programming for Tenants and Members, with the dual aim of building network capacity and creating community.

## Capacity Building

Demand-driven programming that strengthens organizations, improves practice, and helps create real social change.

- **ToolBoxes:** In-depth trainings on topics within international development or organizational management. A few 2016 ToolBoxes included: *USAID Subcontracting Readiness*, *Essentials of Time Management*, and *Moving from a Logic Model to an Evaluation Plan*.
- **Development Dialogues:** Conversations on pressing topics within development, led by experts in our network and beyond. Sample dialogues included: Participatory Planning, Impact Investing, Donor Travel, and Learning from the Field, among others.

### Feedback on 2016 ToolBoxes

4.4 / 5 – Overall usefulness  
4.8 / 5 – Trainer Preparation  
4.7 / 5 – Trainer Expertise  
4.6 / 5 – Trainer Facilitation



## Regis University's Master in Development Practice

The Posner Center is home to an innovative graduate degree designed to meet development's biggest challenges. The Regis University Master in Development Practice (MDP) is an integrated, accessible, and affordable program for working and aspiring development professionals worldwide. The program uses the Posner Center's high-tech IEEE Global Classroom to engage students from 16 countries in dynamic global learning.

### MDP at a Glance:

- **49 total students:** Including 13 from Tenant and Member organizations
- **\$22,900:** Cost of the MDP program for traditional students
- **\$18,360:** Cost of the MDP program for Posner Tenants and Members in the U.S.
- **\$2,225:** Cost of the MDP program for "last kilometer" students in the developing world, or 1% of the cost of the same program at an elite university



*Pictured: Tenants build community in various ways, from Halloween costumes to a Ping Pong tournament.*



## Community Building

The Posner Center is working to create a community of innovators, so some programming is intentionally fun and geared towards networking. We believe that having fun helps create relationships. Strong relationships, in turn, support information sharing, learning, and collaboration.

- **Block Parties:** Enable Tenants and Members to share their work and introduce themselves to the community.
- **Craft Beer Club:** Happens monthly because "bad beer is a global issue" (and because good beer brings people together).
- **Community Lunch:** Brings Tenants together over food and good conversation.
- **2016 Ping Pong Tournament:** The crown jewel of our community-building activities, enabling people to compete for the important title of "Posner Center Ping Pong Champion."

## Posner Perk

Nothing builds community and creates happiness like dogs. We like our furry friends so much, we even made a calendar of them.

Here's Teddy—playing Santa Claus for September 2016—whose proud companion is Melissa Thessen of Tenant Children's Future.





# OUTREACH

## STRENGTHENING OUR NETWORKS

The Posner Center worked strategically to improve our collective visibility and identify opportunities for partnership outside our existing network. We connected with Washington, D.C.-based development leaders, grew relationships with other international development networks in the US, deepened connections in Denver, and continued to spread the word about the Posner Center's model.



### Beltway Visitors

Plan International USA brought a delegation of senior leaders to Denver to explore potential avenues for partnership. The delegation included Ann Hudock, VP of International Programs; Marcio Nascimento, Senior Director of Business Development; and Darren Saywell, Senior Director of Water, Sanitation and Hygiene (WASH). The focus of the conversations ranged from geographic to topical, including agriculture and WASH.

In July, Eric G. Postel, Associate Administrator of the US Agency for International Development (USAID), spent a day at the Posner Center. In addition to sharing about USAID's efforts over a lunchtime presentation, he engaged in meetings with Tenants and Members on topics including economic development, K-12 and higher education, and international business.

### Exploring Expansion

This year, we began exploring opportunities for expanding our collaborative approach to other US cities. The Posner Center remains unique as the only international development network in the US with a dedicated co-working space to call home. We have found that sharing a physical space generates so many opportunities for sharing resources and knowledge. We believe this has the power to transform international development work. Our initial outreach efforts have taken many forms:

- **Washington, D.C.:** We presented alongside other regional international development networks at the InterAction conference, highlighting collaborative work being led from outside the beltway;
- **Minneapolis, Minnesota:** Outreach Manager Jess Harig presented the Posner Center model at the annual MINN Ideas Summit, sparking conversations with additional partners; and,
- **Across the U.S.:** Initiated conversations with four regional networks to share about the Posner Center's core programs and explore the potential for virtual participation by these groups.





# Reflection & Response

## CHALLENGES

Despite the many accomplishments of the Posner Center and our network, there are still significant challenges that we face as an organization and that our network faces in their work.

### Posner Center Organizational Challenge

As a unique and innovative concept, we must make the case for the value of a network of organizations working towards a shared mission. A network approach turns traditional funding models upside down and we have an uphill battle to advocate for our network-based approach in a tight funding climate. The Posner Center has a broad network, and it’s essential that we translate this into a strong donor base so we can continue to provide effective programming and truly build capacity for this network of 150+ organizations.

### Network-Wide Challenges

Posner Tenants and Members are not immune to the challenges of the nonprofit sector; in fact, some of these challenges may even be amplified in the international context. In 2016, a few organizations closed their doors, and many more faced real financial hardship. Organizations struggled or failed because major donors ceased their support or large grants ended. Staff and leadership transitions added an additional dimension of organizational vulnerability. In recognition of this, the Posner Center has funded a 2017 International Collaboration Fund scoping grant to explore the level of preparedness for staff and leadership transitions, establish best practices for transitions, and create a road map for essential trainings moving forward.

## MOVING FORWARD

Late in the summer, Posner Center staff and Board of Directors met to develop a five-year strategic plan. Our strategic plan has four key objectives:

### 1. Maintain and Strengthen the Core

We will continue to run a dynamic, fully-occupied shared space that offers targeted, impactful programming for our Tenant and Member community.

### 2. Lead in Collaboration

We will utilize the International Collaboration Fund as a mechanism for truly understanding the nature and value of collaborative work. Via the grants and programming we’ve funded, we’ll seek to understand what works, what doesn’t work, and determine the Posner Center’s role in facilitating effective development work. In addition, the Posner Center plans to use our two state-of-the-art videoconferencing rooms to develop best practices for using technology as a tool for increased international collaboration.

### 3. Concentrate on Colorado

Colorado is home to many internationally-focused organizations, ranging from those focused on diplomacy and business, to those working in education and international development. There is enormous potential to work more effectively as a network and leverage our respective strengths to elevate Denver as a global city. Posner plans to effectively partner with our colleagues and peers in this arena to work towards this aim.

### 4. Explore Expansion

The Posner Center has begun exploring opportunities for a similar model in other cities both domestically and internationally. We’ve held conversations in Boston, DC, Minneapolis, and Seattle, with international conversations planned for future years. The expansion of the Posner Center could take many forms and requires substantial commitment from partners as well as adequate financing. Stay tuned as we explore possibilities.

***Pictured:** Clydens, a 5th grader in Petit Trou de Nippe, Haiti, fetches water from a well supported by Colorado Haiti Project.*



# 2016 Financials

## 2016 STATEMENT OF FINANCIAL POSITION

### Assets

Cash and cash equivalents - unrestricted	\$148,040
Cash and cash equivalents - temporarily restricted	29,500
Accounts receivable	7,668
Contributions receivable - unrestricted	1,750
Contributions receivable - temporarily restricted	75,000
Prepaid deposits	19,911
Property and equipment - net	188,962
Beneficial interest in assets held by others	15,000
<b>Total assets</b>	<b>\$485,831</b>

### Liabilities and Net Assets

<b>Liabilities</b>	
Accrued expenses	\$1,360
Refundable deposits	39,123
Note payable	0
<b>Total liabilities</b>	<b>\$40,483</b>
<b>Net assets</b>	
Unrestricted	\$325,848
Operating	136,886
Net investment in fixed assets	188,962
Temporarily restricted	104,500
Permanently restricted	15,000
<b>Total net assets</b>	<b>\$445,348</b>
<b>Total liabilities and net assets</b>	<b>\$485,831</b>

## 2016 STATEMENT OF ACTIVITIES

### Revenue & Other Support

	<b>Total</b>
Tenant rentals	\$547,557
Individual and corporate contributions	254,004
Foundations	27,500
Membership dues	14,735
Other program income	3,036
Interest income	22
Net assets released from restrictions	0
<b>Total revenue and other support</b>	<b>\$846,854</b>

### Expense

Program services	\$677,945
Supporting services	
Management and general	51,652
Fundraising	44,042
<b>Total expense</b>	<b>\$773,639</b>
<b>Change in net assets</b>	<b>\$73,215</b>

Net assets, beginning of year	\$372,133
Net assets, end of year	\$445,348



# 2016 Posner Tenants

Africa Agenda  
Africa Development Promise  
AfricAid  
African Strategies for Advancing Pathology  
Bridges to Prosperity  
Building Bridges  
Children's Future  
Chinook Fund  
Colorado Mental Wellness Network  
Comunidades Unidas Peru  
Cross-Pollinate Consulting  
Denver Urban Gardens  
East African Social Impact Fund  
EcoAgriculture Partners  
Edge of Seven  
Effect X  
Elephant Energy  
Engineers Without Borders USA  
Facing History and Ourselves  
Friends of ENCA Farm  
Getches-Wilkinson Center  
Global Accelerator Network  
Global Health Connections  
Global Health Foundation  
Global Hope Network International  
Governors' Climate and Forests Fund  
Grassroots Global Development Foundation  
Hand in Hand International Adoptions  
Hope Shines, Inc.  
iDE  
IEEE Smart Village  
Into Your Hands-Africa  
Kaffa House Coffee Company  
Kimetrica

Konektid  
Laboratory to Combat Human Trafficking  
MarketShare Associates  
Meet the Middle East  
Michael Cooper  
Mobile Accord  
Mortenson Center in Engineering for Developing Communities  
National Native American AIDS Prevention Center  
One Acre Fund  
One Person Acted  
Peace Corps  
Purpose Aligned Consulting  
Regis University  
RENEW Strategies  
Restoration Project International  
Rights Consulting & Investigations - Ken Scott  
Rural Community Assistance Corporation  
S.O.U.L. Foundation  
SalusWorld  
Sayara International  
SCOPE International  
Shadhika  
Spencer Associates, Inc  
Starfish  
Technology Partnership  
The Recreation Project  
The Women's Bakery  
United Nations Association - Denver  
Walking Tree Travel  
Women with a Cause  
World Affairs Challenge  
World Child Cancer

# 2016 Board Members

Richard Shuyler – Board Chair  
Elizabeth Ellis – Vice Chair  
Chris Woldum – Treasurer  
Dan Wessner – Secretary  
Mary Perkins  
Patrick Riley  
Diana Walker  
Avery Bang  
Stephanie Dybsky  
Patrick Gaston  
Dan Harris  
Gete Mekennon

# 2016 Posner Members

Africa Network for Animal Welfare (ANAW-USA)  
Africa School Assistance Project  
African Cultural and Event Center  
Agile International  
Arctic and Mountain Regions Development Institute  
Ariel Carroll  
Asian Hope  
Bead for Life  
Beyond Our Borders  
Black Fox Philanthropy LLC  
Blake Kent  
Blue Wing Consulting, LLC  
Build Change  
Business Works  
Catapult Design  
Climate Courage  
Colorado Haiti Project  
Colorado Public Health Association  
Colorado School of Mines  
Cottonwood Institute  
Culture Expanse  
Dare to Innovate  
DaVita Village Health Foundation  
EmBOLDen Alliances  
Empowering Youth in Cambodia  
Empowerment International  
Freshwater Project International  
Friends of Gueoul, Inc.  
Gazbeya  
Gilchrist and Company  
Global Education Fund  
Global Fund for Women  
Global Greengrants Fund  
Global Livingston Institute  
Global Research Institute  
GlobalGiving  
GRAYmatter Solutions for Nonprofits  
Grupo Macro - Macro Spanish  
HealthKind  
Heart of the West Counseling  
JLA Consulting LLC  
Joan M. Van De Griek CPA, LLC  
Lauren Hafford  
MainSpring Innovation  
Managing Systems for Wellness, LLC  
Mending Faces

Nehemiah Gateway  
New Dimension of Hope  
Nivas  
Nokero  
One Earth Foundation  
One School at a Time  
Orbis Institute  
Outreach Uganda  
Polaris Law  
Project C.U.R.E  
Project Managers Without Borders  
Pure Water for the World  
Reliable Outcomes  
Runge Baxter  
Ruralasia Enterprise Services  
Saving Moses  
Sheila Mahony  
Shining Light International  
Society for Orphaned Armenian Relief-CO Chapter  
Souvenirme Design Studio  
Sundance Social Media  
Sustainable Schools International  
Ten Thousand Villages  
The Palapa Society of Todos Santos, A.C.  
The Physis Group  
The Seneca Project  
Threads Worldwide  
Transformational Ventures  
Trees, Water, People  
TRIBE  
UC-Denver, Institute for Int'l Business  
Uhambo  
Ujyalo Foundation  
Univ. of Colorado Denver  
University of Denver Graduate School of Social Work  
University of Denver, JKSiS  
Vertile House  
Village Health Partnership  
Wartburg College West  
Water For People  
Women's Partnership  
World Aid Fostering Education and Agriculture  
WorldDenver  
Write our World  
YNPN  
Yobel International

# 2016 Key Supporters

60+ Tenants and nearly 100 Members  
Joanne Posner-Mayer  
Aimee Kinning  
Anonymous  
Beyond Our Borders  
CoBank  
Cognizant Technology Solutions  
Collegiate Peaks Bank  
Conscious Real Estate  
Development Alternatives International (DAI)  
Geotech Environmental  
Global Accelerator Network

Green Fund  
Harvey Family Foundation  
Leighty Foundation  
Lester Woodward  
Northeast Denver Housing Authority  
Orbis Institute  
Philanthropiece Foundation  
Shuyler Family  
San Francisco Foundation  
Western Union  
Willett Foundation



The Posner Center is a community of nearly 60 international development-oriented businesses and organizations in a 25,000 square-foot shared space in Denver's Curtis Park neighborhood, spurring innovation by enabling groups to cross-pollinate through the exchange of ideas, the overlap of programming, and the generation of more comprehensive and lasting solutions to global poverty.

**For any questions, please contact:**

720-382-7631 • [info@posnercenter.org](mailto:info@posnercenter.org)



**POSNER CENTER**  
FOR INTERNATIONAL DEVELOPMENT

[posnercenter.org](http://posnercenter.org)