



**POSNER**  
CENTER

**2017 ANNUAL REPORT**



# TRANSFORMING INTERNATIONAL DEVELOPMENT

## Director's Letter

### DEAR COLLABORATORS,

2017 marked transition and transformation for the Posner Center for International Development.

The Posner Center launched in 2013 as a grand experiment: the world's first collaborative center for international development, intended to disrupt the phenomenon of international development organizations operating in isolation from one another.

Just four short years later, we can declare success. Our building is full and our community is engaged, learning, and thriving. It is now time to build on this success, and take the next big step.

We have a refocused mission to **convene, connect and catalyze** the international development community to collaborate for greater impact, and a new vision of a **more equitable and prosperous world**. This vision and mission frames our five-year strategic plan that sets us on an ambitious journey far beyond the walls of the Horse Barn.

We aim to be a major thought leader in international development, making meaningful contributions to best practices in the sector, with a focus on what we are learning about collaboration.

We want to give our community new ways to engage with one another and international development organizations worldwide. We want to support their efforts to communicate, advocate, and promote their work, and stand shoulder to shoulder in a never-ending demand to do international development better.

This is a magnificent time to be part of our community and to partner with us in championing and supporting the work of our community. Investment in the Posner Center—either as a Tenant, Member, Board Director, partner, sponsor, or donor—continues to return exceptional value.

Please join us in as we transform and elevate the Posner Center grand experiment into a rigorous model of collaboration.



**Burke Fishburn**  
Executive Director

# 2017 By the Numbers

We are an innovative and entrepreneurial community. We share our knowledge, experience, expertise, and resources, pushing the concept of collaboration towards concrete, measurable results.

## A DYNAMIC AND THRIVING COMMUNITY

There are almost 200 organizations that call the Posner Center home, either as Tenants or as Members. Our Tenants work in our historic Horse Barn shared space in Denver’s Curtis Park neighborhood. Our Members participate in an annual program that provides them access to the Horse Barn and all of our capacity building, educational, networking and social events.

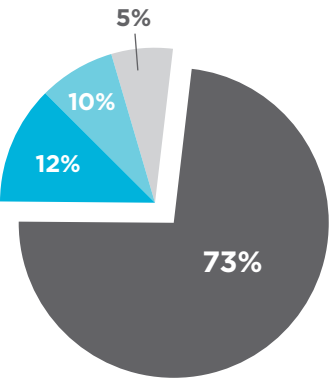
Our community is diverse. We are international organizations, universities, foundations, consultants, and other organizations and individuals, all with a shared commitment to international development.

### Community Composition

Tenants & Members



- Non-Profits
- For-Profits (Including consultants and companies)



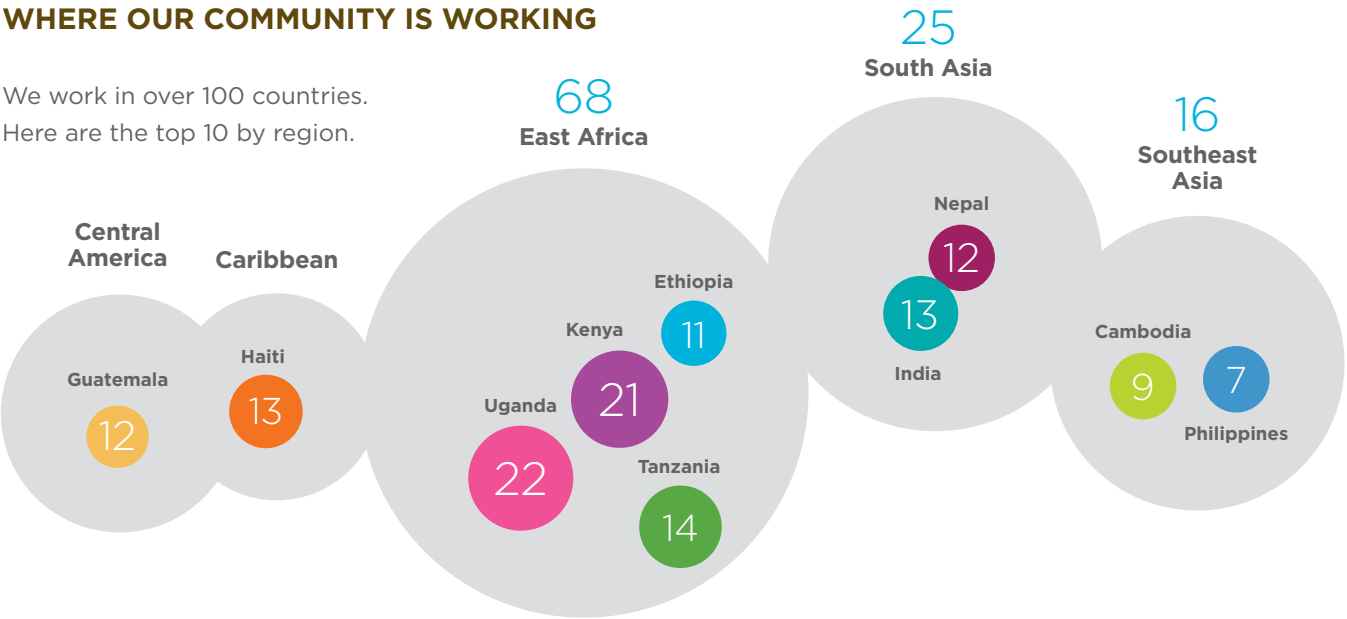
### Community by Type

Tenants & Members

- Organization
- Consultant
- Individual
- University

## WHERE OUR COMMUNITY IS WORKING

We work in over 100 countries. Here are the top 10 by region.



## WHAT OUR COMMUNITY DOES

Our community works in virtually every sector of international development and in almost every discipline. For example, they are building agricultural market systems, engineering projects that empower communities, modeling social impacts of climate change, creating opportunities for start-ups to access human and financial capital, and delivering practical, skills-based education to help students solve poverty for themselves and their communities.

Here are the top 10 areas of our community’s focus.

Area of Focus	Organizational Count
Education / Schools.....	86
Children .....	77
Entrepreneurship.....	73
Technology.....	47
Climate / Environment.....	43
Water / Sanitation.....	42
Agriculture / Food Security.....	37
Health .....	36
Peace and Justice .....	35
Policy and Research.....	33



# Our Impact

## HOW POSNER'S WORK IMPACTS OUR COMMUNITY

One of Posner's primary purposes is to support our community and advance their work by helping them **convene**. We do this by providing a wonderful place to work and holding meetings and events. We also help them **connect** by facilitating consequential interactions and by building relationships through our networking and social events, as well as day-to-day conversations. And we **catalyze** collaboration through an innovative grant program, organizational and professional development opportunities, and helping to build stronger organizations.

85%

Believe it has contributed to their professional development

78%

Believe it has enabled them to exchange information, skills, or resources with other Tenants and Members

76%

Believe it has enabled them to collaborate more

76%

Believe it has made them a happier person

82%

Believe it has expanded their professional networks

“

*I love coming to work every day, knowing that people will be happy and helpful. I will have access to everything I could possibly need from an office. We feel honored to be part of this amazing community.*

**Hope Mukai, World Affairs Challenge**

*Being at Posner has allowed us to find and attract fantastic faculty to our program.*

**Nina Miller, Regis University, Master of Development Practice Program**

*[The Posner Center] has been a really great home, one that's allowed us to grow a lot. We learned by being in community, and it's helped us think about how we could grow in a more sustainable fashion, and not always reinvent the wheel.*

**Avery Bang, Bridges to Prosperity**

*Posner is completely unique in all of Colorado, if not the world, in such a coalescence of minds to combat poverty around the world.*

**Joshua Knight, Global Hope Network International**

*It's been a great place for us and is a benefit for my employees - actually is something that helps us attract talent.*

**Kim Burnett, Shadhika**



POSNER CENTER

**INTERNATIONAL  
COLLABORATION FUND**

## Catalyzing Collaboration

Launched in 2015, the International Collaboration Fund (ICF) is a grant program that is transforming how international development work is done. We fund innovative partnerships within our community, leveraging the power of collaboration for greater impact.

\$183,631

Total amount awarded since 2015

23

Projects funded since 2015

45

Tenants, Members, and partner organizations impacted since 2015

## 2017 ICF PROJECTS

- **Field Assessment for Irrigation and Water Access** *Malawi*  
Freshwater Project International and Engineers Without Borders USA
- **Accelerator Bootcamp for Social Enterprises Planning** *Colorado*  
GAN and iDE
- **Feedback Tool for Sustainable Development Goal Five** *Colorado & Guatemala*  
Starfish and EffectX
- **Building Capacity of Women's Coops** *Uganda*  
Africa Development Promise, Edge of Seven and Epaphroditus Cooperative Society
- **First Aid Training for Disabilities** *South Africa*  
emBOLDen Alliances and Uhambo
- **Organizational Transition Planning and Preparation** *Colorado*  
Edge of Seven, Children's Future, and SalusWorld
- **Shared Capacity Building and Grant Writing Services** *Colorado*  
Friends of ENCA Farm, Africa Development Promise, Children's Future, Edge of Seven, Hope Shines, and The Women's Bakery

## 2017 ICF PROJECT DONORS

- Beyond Our Borders
- CoBank
- Green Fund
- Harvey Family Foundation
- Leighty Family Foundation





## Programming

The Posner Center develops, funds, and conducts programming for our community that builds collaborative relationships, strengthens organizational and professional development, and helps organizations promote and advocate their work. Here is a sample of the scope and depth of what we produce.

### **Innovators Dinner**

The Innovators Dinner honors individuals who are making their mark on global poverty alleviation by thinking outside the box, being disruptive, and challenging prevailing ideas and approaches to combating poverty. In 2017, we featured Amy Smith, the Founding Director of the MIT D-Lab, a university-based program that promotes innovative, community-led international development.

### **Business Leaders**

The Business Leaders event highlights international partnerships between Tenant and Member non-profits and businesses that simultaneously confront global poverty and meet strategic business objectives.

### **Collaboration Celebration**

It was a party! In 2017 the Posner Center welcomed over 200 guests—that included our supporters and the broader community—to an open house to celebrate the impressive work of our Tenants and Members.

### **ToolBoxes**

These are in-depth trainings on topics within international development or organizational management. Examples of 2017 ToolBoxes included an introduction to strategic planning, assessing grant readiness, and a specific approach to measurement, evaluation, and quality improvement.

### **Development Dialogues**

These dialogues are conversations on pressing topics within development, led by experts from our network and beyond. Among others, 2017 Dialogues included: Perspectives from the Global South; Bringing a Feminist Curiosity to Development; Lean Data Collection; and, International Development in a New Administration.

### **Block Parties**

These gatherings enable Tenants and Members to share their work and introduce themselves to the Posner community, sparking ideas for collaboration.



# Strategic Plan

In 2017, we took a hard, honest look at what we have done and the progress we have made in our four short years of existence. We came away with a simpler and more focused vision for the contribution we want to make to international development.

After months of intensive work, we are very pleased to announce the Posner Center Strategic Plan for the next five years, from 2018 to 2022.

## WHAT'S NEW? WHAT'S DIFFERENT?

Our Tenant and Member community—and the Horse Barn building—are the heart and soul of the Posner Center. But we are much more than a collection of coworkers: The Posner Center aims to be a thought leader in international development.

We are placing even greater emphasis the role of evaluation and pursuing best practices to improve the impact of international development work.

We also want to do much more to communicate our collaboration efforts and provide opportunities for the Posner Center community to promote their organizations and their work.

### Mission

Our mission is to convene, connect, and catalyze the international development community to collaborate for greater impact.

### Vision

Our vision is a more equitable and prosperous world.



## Strategic Areas & Goals

### Convene

We will continue to bring together Colorado's international development community, physically and virtually, with an emphasis on creating and sustaining a collaborative community culture that is inclusive, engaging, and creative.

### Connect

We will empower our community to develop new relationships to share, increase capacity, and promote the successes of our collective efforts.

### Catalyze

We will transform international development work through our programs, evaluating and advancing best practices in collaboration. We will do this by fostering effective collaborative international

development through the International Collaboration Fund and related efforts, and developing and communicating best practices in collaborative international development. We will also continue to explore and promote opportunities for the adaptation of the Posner Center model.

Our planned activities in 2018 will prioritize the promotion of best practices in international development, particularly what we have learned through our effort to support collaboration to increase organizational effectiveness. We are planning an annual international development symposium that will evolve to a conference, as well as a periodic report on best practices in collaboration that will evolve to a journal.







# 2017 Financials

## 2017 STATEMENT OF FINANCIAL POSITION

### Assets

Cash and cash equivalents - unrestricted	\$196,832
Cash and cash equivalents - temporarily restricted	25,000
Accounts receivable	1,933
Contributions receivable - unrestricted	0
Contributions receivable - temporarily restricted	80,000
Prepaid deposits	19,911
Property and equipment - net	154,528
Beneficial interest in assets held by others	25,577
<b>Total assets</b>	<b>\$503,781</b>

### Liabilities and Net Assets

<b>Liabilities</b>	
Accounts payable	\$13,708
Accrued expenses	5,067
Refundable deposits	39,917
<b>Total liabilities</b>	<b>\$58,692</b>
<b>Net assets</b>	
Unrestricted	
Operating	\$160,561
Net investment in fixed assets	154,528
Temporarily restricted	105,000
Permanently restricted	25,000
<b>Total net assets</b>	<b>\$445,089</b>
<b>Total liabilities and net assets</b>	<b>\$503,781</b>

## 2017 STATEMENT OF ACTIVITIES

### Revenue & Other Support

	<b>Total</b>
Tenant rentals	\$566,142
Individual and corporate contributions	53,824
Foundations	51,000
Membership dues	18,295
Other program income	2,559
Investment income	602
In-kind contributions	3,950
Net assets released from restrictions	0
<b>Total revenue and other support</b>	<b>\$696,372</b>

### Expense

Program services	\$608,928
Supporting services	
Management and general	52,203
Fundraising	35,500
<b>Total expense</b>	<b>\$696,631</b>
Change in net assets	(259)
<b>Net assets, beginning of year</b>	<b>\$445,348</b>
<b>Net assets, end of year</b>	<b>\$445,089</b>

# Key Support

## 2017 BOARD MEMBERS

<b>Richard Shuyler</b> Chair	<b>Lizz Ellis</b> Vice Chair
<b>Chris Woldum</b> Treasurer	<b>Dan Harris</b> Secretary
<b>Stephanie Dybsky</b> <b>Patrick Gaston</b> <b>Mary Perkins</b>	<b>Patrick Riley</b> <b>Diana Walker</b>

## 2017 STAFF

<b>Burke Fishburn</b> Executive Director	<b>Ezzie Dominguez</b> Facilities Manager
<b>Meg Sagaria-Barritt</b> Interim Executive Director & Program Director	<b>Vicki Ireland</b> Tenant Manager
<b>Jess Harig</b> Development Manager	

After the departure of Doug Vilsack in December 2016, we were without an Executive Director for half of the year. During this time, we leaned heavily on the leadership of our Interim Executive Director and Program Director, Meg Sagaria-Barritt and our Board Chair, Rick Schuyler, as well as the entire Posner Center staff and Board. Thank you all!

## 2017 DONORS

60+ Tenants and 120+ Members  
JHJ Posner Family Fund  
Beyond Our Borders  
Chris Woldum  
CoBank  
Collegiate Peaks Bank  
Daniel & Julie Harris  
Diana Walker  
Entrepreneurial Law Clinic—  
University of Colorado  
Geotech Environmental  
Green Fund  
Jon Mottern, Green Door Living  
Harvey Family Foundation  
Leighty Family Foundation  
Lester Woodward  
Lizz Ellis  
Mary Perkins  
Patrick Gaston  
Patrick Riley  
PB and K Family Foundation  
Rose Community Foundation  
Shuyler Family  
Stephanie Dybsky  
Vaughn Ventures  
Willett Foundation



## Working together for a more equitable and prosperous world.

The Posner Center is an innovative, impact-driven organization with a mission to convene, connect and catalyze the international development community to collaborate for greater impact.

We bring together development organizations working across all sectors in over 100 countries, empowering them to develop new relationships, share knowledge and resources, increase their capacity, and **transform international development.**



**POSNER**  
CENTER

**CONTACT US TO LEARN MORE**

[info@posnercenter.org](mailto:info@posnercenter.org)  
[posnercenter.org](http://posnercenter.org)  
720-382-7631