

A Collaborative Model in Global Development



POSNER
CENTER

Agenda



Goals of the Study

Literature review

Methodology

Findings

Collaboration Tools

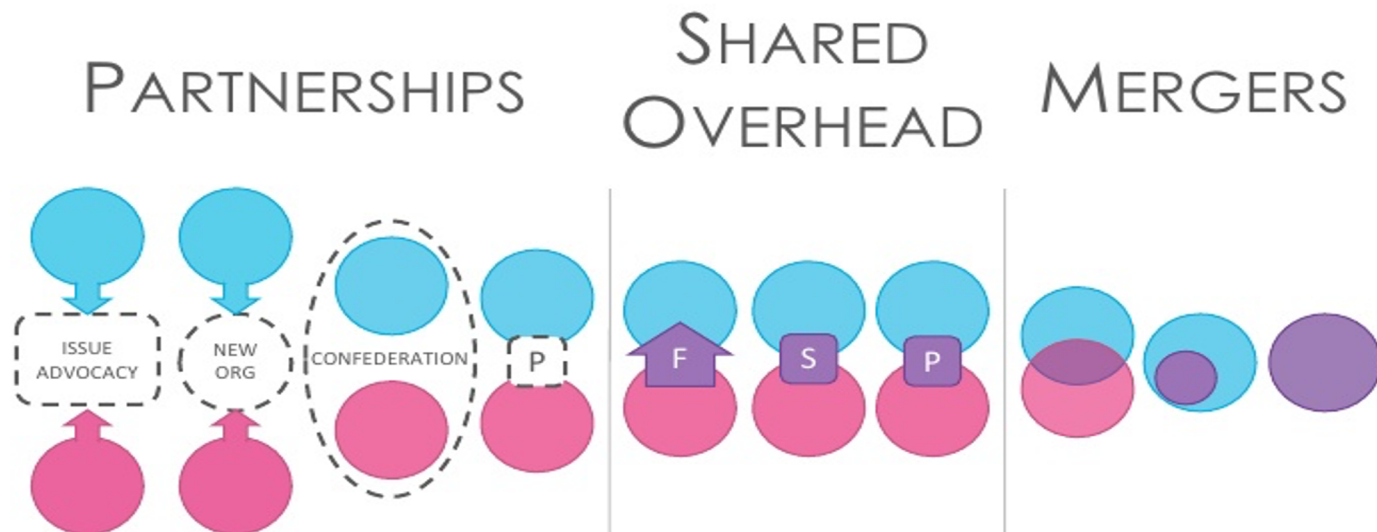
Conclusion

Goals of the study

- Present collaboration between organizations (nonprofit, for profit) working in global development
- Assess the Posner Center (PC) role and impact on collaboration in global development
- Support the PC to evaluate its long term impact on collaboration in global development
- Assist the PC to find new ways to push for more successful collaborative work in communities

Literature Review

10 types of Collaboration



Advantages of Collaboration



Benefits of Collaboration

(Hastings 1996; Mayo 1997;
Jupp 2000)

1. Stimulate innovation and provide increased reach to beneficiaries
2. Increase efficiency and effectiveness
3. Create more effective ways of doing things
4. More flexibility to take on risks
5. Share common expenses

Barriers of Collaboration

BARRIERS TO COLLABORATION



Methodology

Methodology

- Sampling
- Data Collection
- Data Analysis

Codes	Global Seed Savers	Maji Safi Group	Into Your Hands Africa	EWB - USA	Shadhika	Bext360	Africa School Assistance Project (ASAP)	Total
Sharing	1	1	1	1	1	1	1	7
Transparency	1		1	1	1	1	1	6
Communication	1	1		1		1	1	5
HR		1	1	1	1	1		5
Clear roles		1	1	1			1	4
Cultural difference	1	1		1	1			4
finance/equity	1	1	1			1		4
Internal tools		1		1	1		1	4
Adaptation	1		1		1	1		4
Long term	1			1			1	3
Learning			1	1	1			3
Follow up tools		1		1		1		3
Management tools			1			1		2
Value						1		1

Coding themes per organizations

Findings

RQ1: What Do Tenants and Members Gain from a Collaborative Experience?

- Access to collaborative funds
- Posner Center guidance and support
- Value creation
- Proximity in the PC helps for capitalization and sharing of experiences

Achieving Successful Collaboration

- Structure
- Shared vision
- Honesty / Trust
- Transparency / Clear roles
- Respect for deadlines
- Clear / Open communication
- Building a strong relationship with the leadership
- Adaptation
- Set the goals

R2: What Additional Support from the Posner Center Can Enhance the Collaboration Between Tenants and Members?

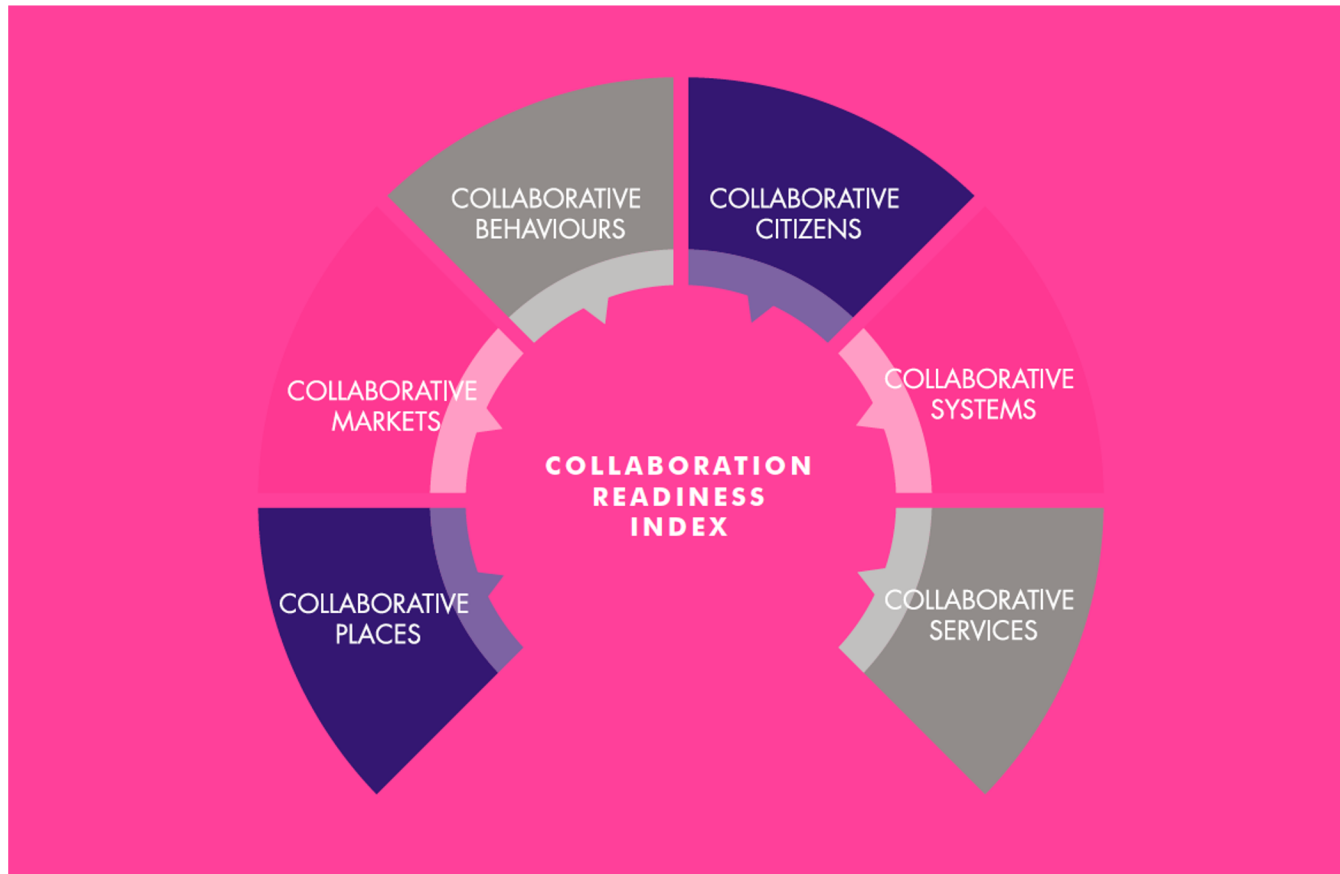
Global Seed Savers	Tools to navigate the challenges in a collaboration project Tools that can help to define the value and the process of equity with a local partner
Maji Safi Group	Quick best practices guide, easy templates to adapt
Into Your Hands Africa	How to identify partners Database updated by the Posner Center showing opportunities to connect Collaboration best practices guide with local partners How to deal with remote access in the collaborative work
EWB - USA	Frameworks for relationships, simple Workplan Tools/tips for scheduling, communication Creation of generic documents, presentation, a video about the elements of success and the challenges during collaborations
Shadhika	How to respond to existing challenges that can stop collaboration
Bext360	Formal tools about value alignment How to identify a champion in an organization? General tips for organizations
Africa School Assistance Project (ASAP)	Collaboration package with all tools inside the package to help partners when they start

Challenges: More Support for the PC?

- Cross-cultural exchange
- Different practices / Different visions
- Different expectations
- Organizational capacity
- Context change (organization or environment)
- Lack of funding
- Staff working on the project
- Top down communication
- Unrealistic goals


Collaboration Tools

Collaboration Readiness Index



The state of collaboration report, Greg Parston & Anna Randle
(2018)

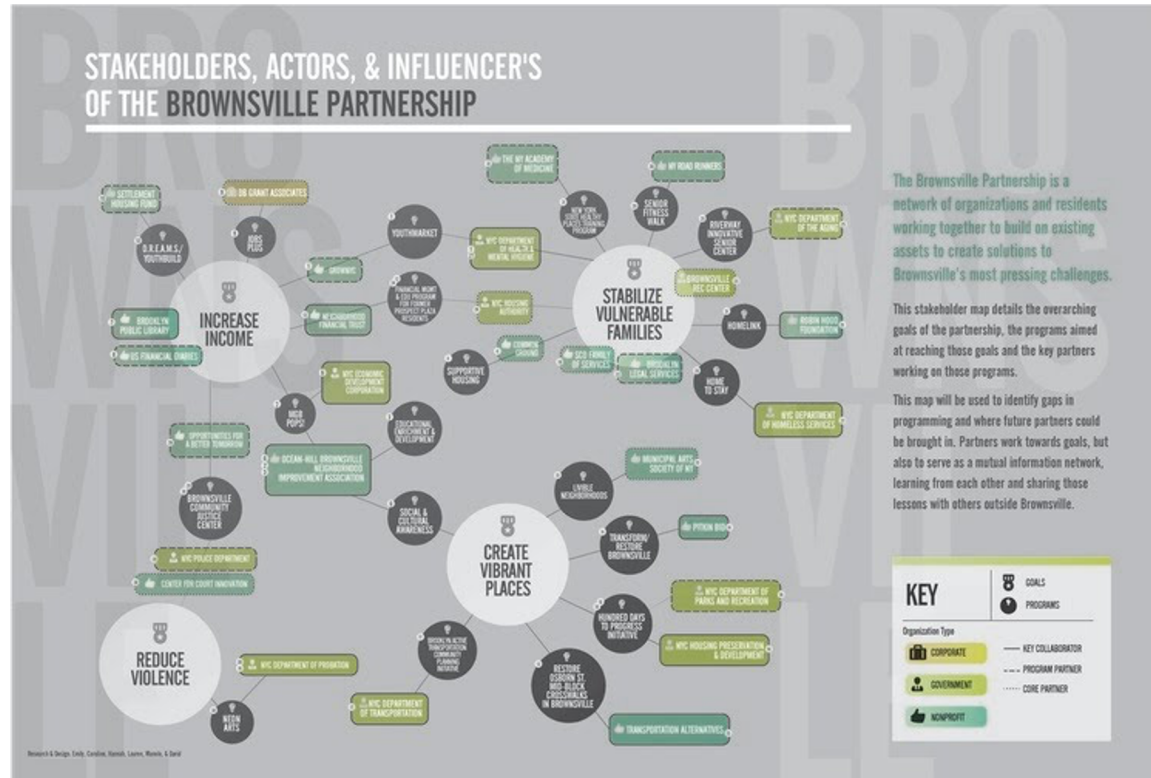
Service Mapping

PUI - Information on Services											
								9. Services provided			
No.	1. Name of the organisation	2. County / District / LGA	3. Village / Town / Camp	4. Contact person (referral focal point)	5. Phone	6. Email	7. When did the organisation started providing services?	8. Is the organization formally registered ?	Service 1	Service 2	Service 3
1	Plan international	Maiduguri	Bolori II	Damenso apaulus njdda	08168075495	damenso.njdda@plan-international.org	April, 2019	Yes	Multisectoral services for GBV survivors	Financial assistance for vulnerable families	Child friendly space
2	Mercy Corps	Maiduguri	Bolori II	Shedrack steven	08039747411	ssteven@mercycorps.org	November, 2017	Yes	Vocational training	Adolescent mentoring program	
3	IMC	Maiduguri	Bolori II	Adaeze Erundu	08067262101	gbenjamin@internationalmedicalcorps.org	Febuary, 2019	Yes	Women safe space/ PSS	Case management for GBV survivors	Income Generating Activities
4	International Rescue Committee(IRC)	Maiduguri	Bolori I and II	Amina Mshelia	07036080201	amina.mshelia@rescue.org	2016	Yes	Legal aid support for GBV survivors		
5	Medecins du Monde	Maiduguri	Bolori I and II (for referral only)	Sandrine Tonoukouin	07067690186	coord.gbv.nigeria@medecinsdumonde.net	October, 2016	Yes	Medical care for GBV survivors (including clinical management of rape [CMR])	Multisectoral services for GBV survivors	Primary Health Care
6	Family Health International 360	Maiduguri	Bolori II	James olobo	08064731407	jolobo@fhi360.org	March, 2019	Yes	Non-Formal education	Teacher training	
7	Solidarites International	Maiduguri	Bolori II	Mohammed	08034751575	mdg.field.coo.ast@solidarites-nigeria.org	2018	Yes	Hygiene promotion	Improved water supply	Improved sanitation facilities

- Directory of partners working in the same location
- For the beneficiaries, the partners, the donors and stakeholders in general

Service Mapping

- Stakeholders mapping
- Visualize the active potential partners working toward the same goals
- Label the partners according to their goals and responsibilities
- Highlight collaborative opportunities and gaps in partnerships



<http://hannahelizabethphang.com/brownsville-partnerships-map>

Partnership Selection Tool

- Due diligence
- Partnership-specific criteria
- Define the value and the process of equity with a local partner
- Value alignment
- Value creation

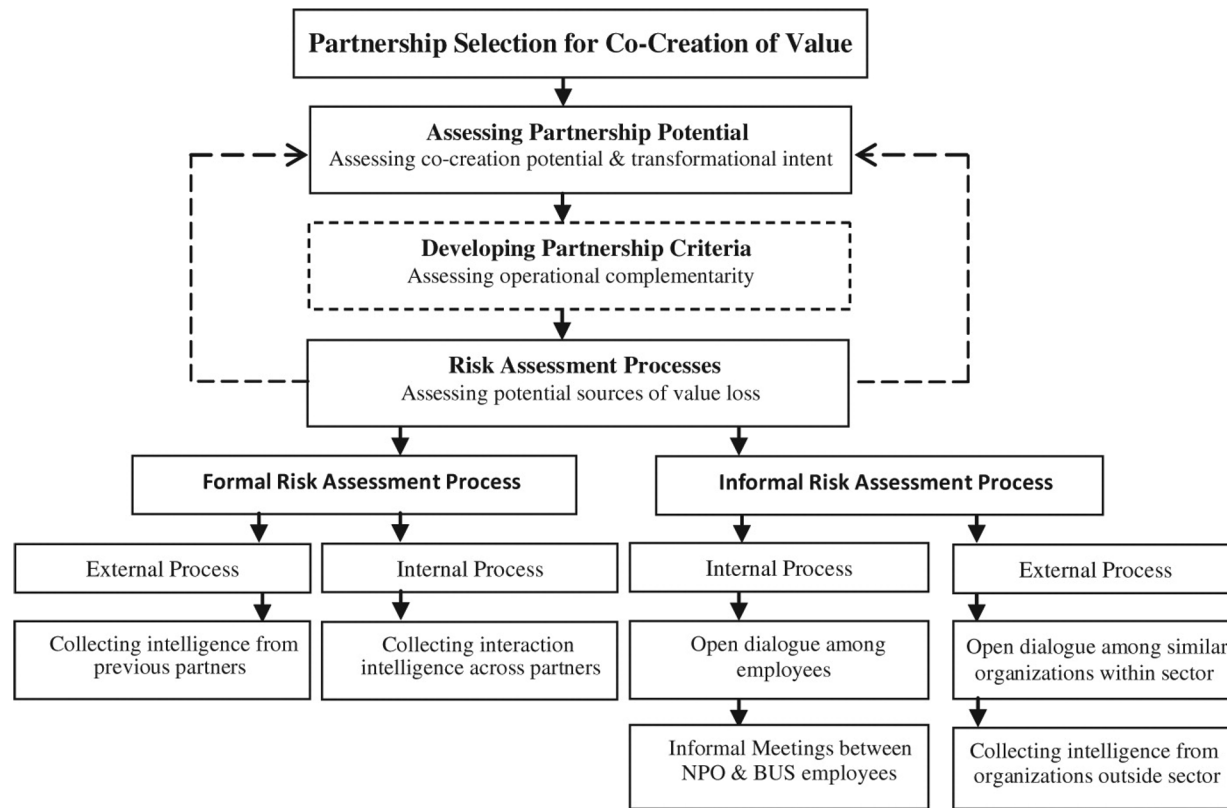
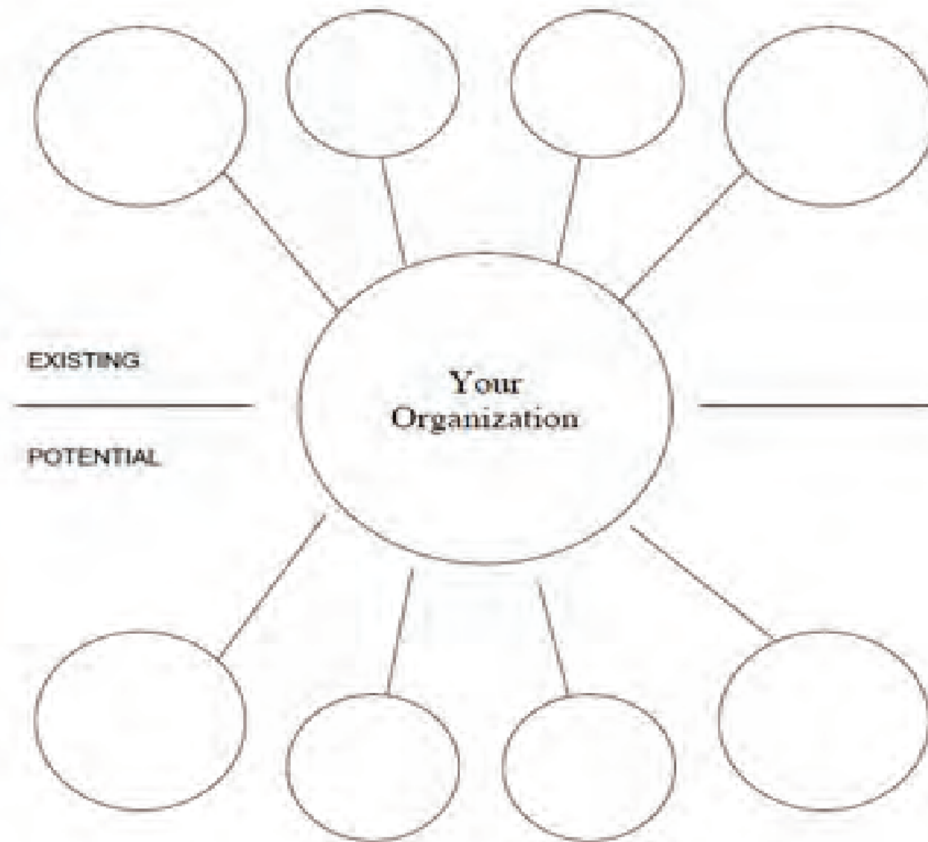


Figure 2. Partnership Selection for Co-creation of Value

Adapted From Seitanidi and Crane (2009)

Partnership Selection Tool

A tool to illustrate partnerships that your organization already has with institutions or associations in your community and to think about new partnerships which might be useful to your organization.



- Duncan, D. (2016). Asset Based Community Development: Asset Mapping Toolkit.

New Collaboration Tools or Resources

- Adapting existing reference documents for a global development audience
- Package for organizations newly engage in collaborative work (how / when to use the tools)
- Package for capitalization of tools for organizations which are used to collaborative work in global development

Conclusion

Thank You!

Questions are welcome